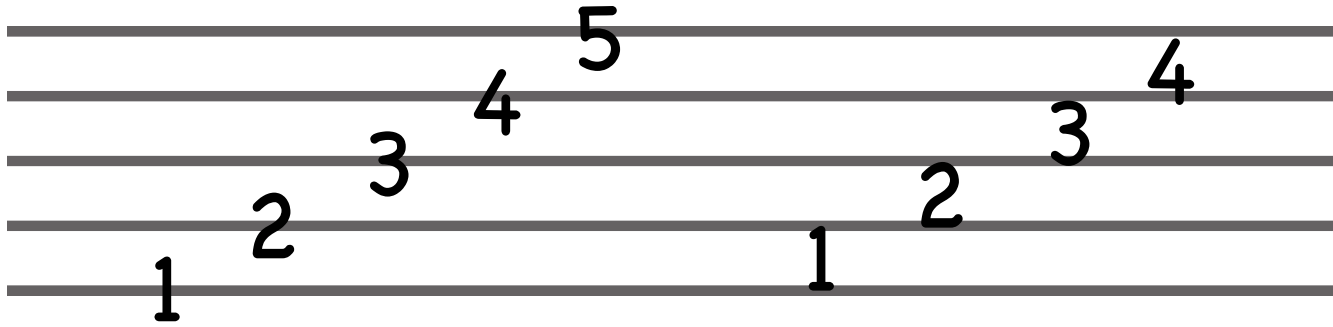


We read music on the **staff**, these 5 lines and 4 spaces:

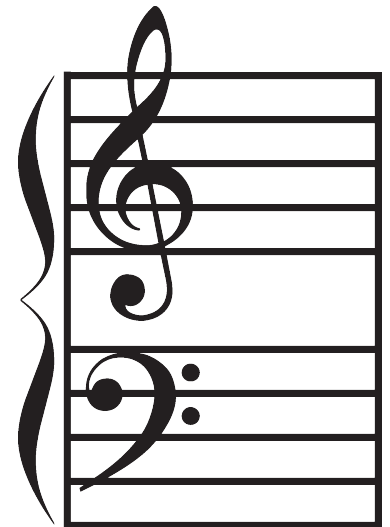


The **Treble Clef**
is used for high
notes ...



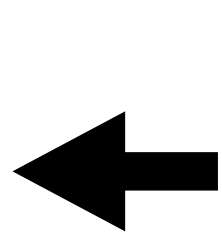
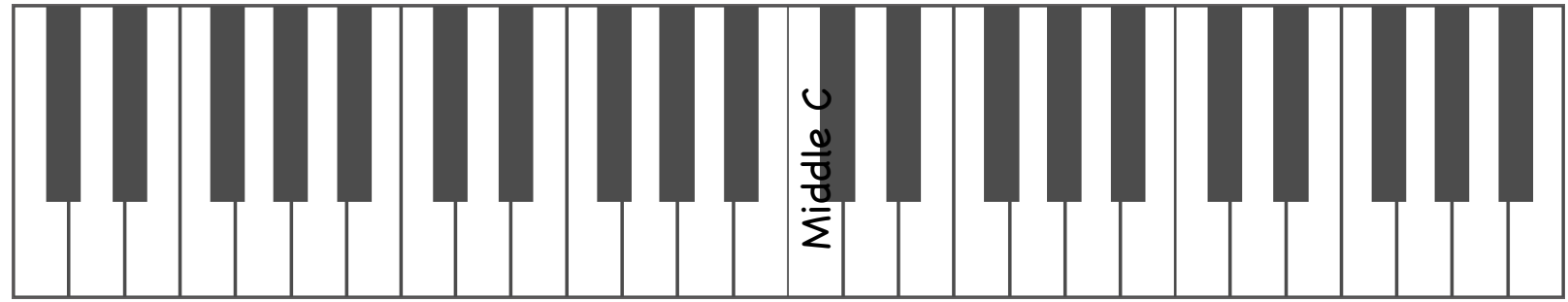
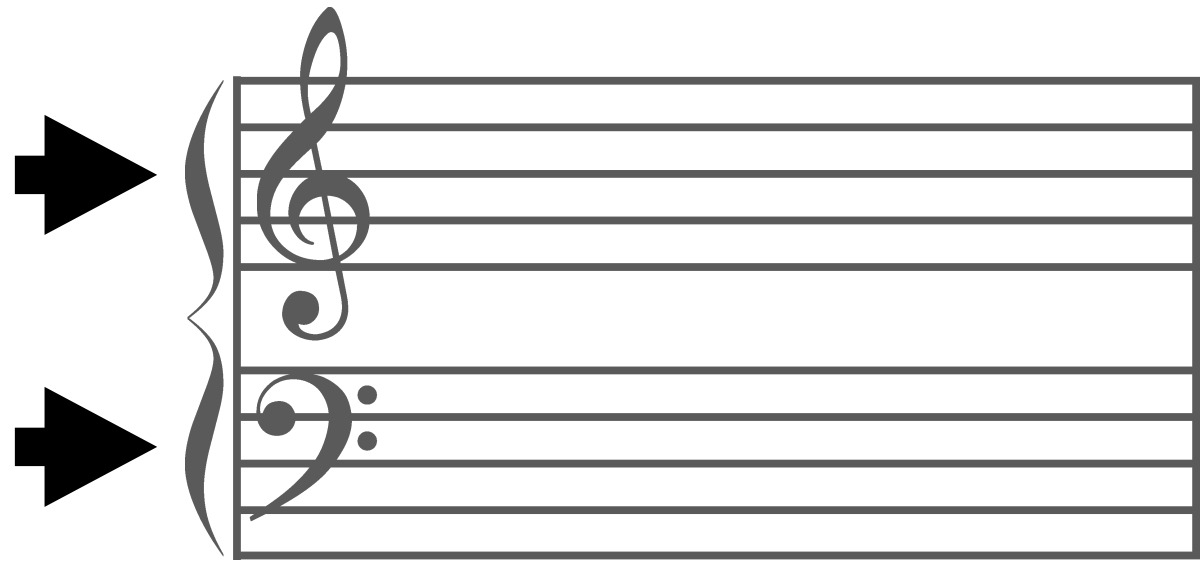
... and, the **Bass
Clef** is used for
low notes!

Combine these together
on the **staff** and you get
the **Grand Staff**, which
is what piano music is
written on



Notes in the **Treble Clef** are played by the Right Hand.

Notes in the **Bass Clef** are played by the Left Hand.



LH



RH

